

- SYMBOLS**
- 1. Surveyed Boundary Condition
  - 2. Proposed Boundary Condition
  - 3. Proposed Boundary Condition
  - 4. Proposed Boundary Condition
  - 5. Proposed Boundary Condition
  - 6. Proposed Boundary Condition
  - 7. Proposed Boundary Condition

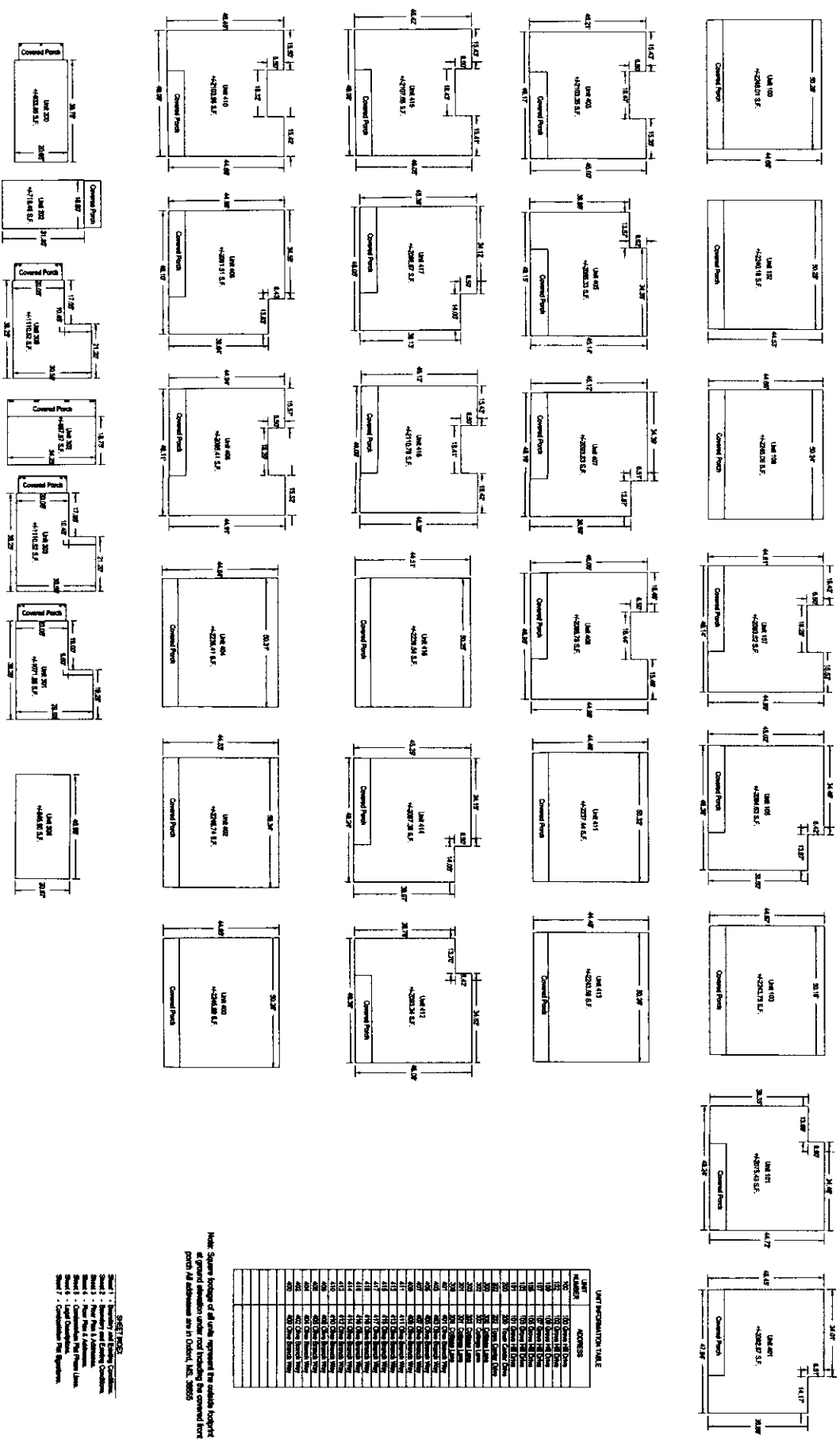
**WILLIAMS ENGINEERING CONSULTANTS, INC.**  
Professional Engineers | Professional Land Surveyors

720 NORTH LAMAR BOULEVARD, SUITE A  
P.O. BOX 1187 OXFORD, MISSISSIPPI 38655  
802.238.9078

**Boundary Survey & Condominium Plat For:**  
**Rowandale, A Condominium**  
PHASES 1 A,C,D; PHASES 2A,B; PHASES 3A,B  
Northeast Quarter (NE 1/4) of Section 16, Township 8 South, Range 3 West,  
City of Oxford, Lafayette County, Mississippi.

NO.	REVISIONS	DATE
1		
2		
3		
4		
5		
6		
7		
8		
9		
10		
11		
12		
13		
14		
15		
16		
17		
18		
19		
20		

**DATE:** 07/18/2022  
**PROJECT:** ROWANDALE, A CONDOMINIUM  
**PHASES:** PHASES 1 A,C,D; PHASES 2A,B; PHASES 3A,B  
**CLIENT:** JAMES R. BROWN, JR.  
**DESIGNED BY:** JMM  
**CHECKED BY:** JMM  
**DATE:** 07/18/2022



UNIT INFORMATION TABLE

UNIT	ADDRESS
101	101 SOUTH 28TH
102	102 SOUTH 28TH
103	103 SOUTH 28TH
104	104 SOUTH 28TH
105	105 SOUTH 28TH
106	106 SOUTH 28TH
107	107 SOUTH 28TH
108	108 SOUTH 28TH
109	109 SOUTH 28TH
110	110 SOUTH 28TH
111	111 SOUTH 28TH
112	112 SOUTH 28TH
113	113 SOUTH 28TH
114	114 SOUTH 28TH
115	115 SOUTH 28TH
116	116 SOUTH 28TH
117	117 SOUTH 28TH
118	118 SOUTH 28TH
119	119 SOUTH 28TH
120	120 SOUTH 28TH
121	121 SOUTH 28TH
122	122 SOUTH 28TH
123	123 SOUTH 28TH
124	124 SOUTH 28TH
125	125 SOUTH 28TH
126	126 SOUTH 28TH
127	127 SOUTH 28TH
128	128 SOUTH 28TH
129	129 SOUTH 28TH
130	130 SOUTH 28TH
131	131 SOUTH 28TH
132	132 SOUTH 28TH
133	133 SOUTH 28TH
134	134 SOUTH 28TH
135	135 SOUTH 28TH
136	136 SOUTH 28TH
137	137 SOUTH 28TH
138	138 SOUTH 28TH
139	139 SOUTH 28TH
140	140 SOUTH 28TH
141	141 SOUTH 28TH
142	142 SOUTH 28TH
143	143 SOUTH 28TH
144	144 SOUTH 28TH
145	145 SOUTH 28TH
146	146 SOUTH 28TH
147	147 SOUTH 28TH
148	148 SOUTH 28TH
149	149 SOUTH 28TH
150	150 SOUTH 28TH
151	151 SOUTH 28TH
152	152 SOUTH 28TH
153	153 SOUTH 28TH
154	154 SOUTH 28TH
155	155 SOUTH 28TH
156	156 SOUTH 28TH
157	157 SOUTH 28TH
158	158 SOUTH 28TH
159	159 SOUTH 28TH
160	160 SOUTH 28TH
161	161 SOUTH 28TH
162	162 SOUTH 28TH
163	163 SOUTH 28TH
164	164 SOUTH 28TH
165	165 SOUTH 28TH
166	166 SOUTH 28TH
167	167 SOUTH 28TH
168	168 SOUTH 28TH
169	169 SOUTH 28TH
170	170 SOUTH 28TH
171	171 SOUTH 28TH
172	172 SOUTH 28TH
173	173 SOUTH 28TH
174	174 SOUTH 28TH
175	175 SOUTH 28TH
176	176 SOUTH 28TH
177	177 SOUTH 28TH
178	178 SOUTH 28TH
179	179 SOUTH 28TH
180	180 SOUTH 28TH
181	181 SOUTH 28TH
182	182 SOUTH 28TH
183	183 SOUTH 28TH
184	184 SOUTH 28TH
185	185 SOUTH 28TH
186	186 SOUTH 28TH
187	187 SOUTH 28TH
188	188 SOUTH 28TH
189	189 SOUTH 28TH
190	190 SOUTH 28TH
191	191 SOUTH 28TH
192	192 SOUTH 28TH
193	193 SOUTH 28TH
194	194 SOUTH 28TH
195	195 SOUTH 28TH
196	196 SOUTH 28TH
197	197 SOUTH 28TH
198	198 SOUTH 28TH
199	199 SOUTH 28TH
200	200 SOUTH 28TH

Note: Square footages of all units represent the unit's footprint at ground elevation under roof including the covered porch. All addresses are in Oxford, MS, 38855.

- REVISIONS
- Sheet 1 - Boundary Survey
  - Sheet 2 - Survey and Existing Conditions
  - Sheet 3 - Proposed Unit Layouts
  - Sheet 4 - Unit Addresses
  - Sheet 5 - Condominium Plat
  - Sheet 6 - Unit Addresses
  - Sheet 7 - Unit Addresses
  - Sheet 8 - Unit Addresses
  - Sheet 9 - Unit Addresses
  - Sheet 10 - Unit Addresses



**WILLIAMS ENGINEERING CONSULTANTS, INC.**  
 Professional Engineers | Professional Land Surveyors

720 NORTH LAMAR BOULEVARD, SUITE A  
 P.O. BOX 1157 OXFORD, MISSISSIPPI 38855  
 662.236.8675

Boundary Survey & Condominium Plat For  
**Rowandale, A Condominium**  
 PHASES 1 A,C,D, PHASES 2A,B; PHASES 3A,B  
 Northeast Quarter (NE 1/4) of Section 15, Township 8 South, Range 3 West,  
 City of Oxford, Lafayette County, Mississippi.

NO.	DATE	DESCRIPTION
1	7-1-22	ISSUED

Drawn By: JMW/MLP  
 Checked By: JMW  
 Date: 7/1/22

Scale: 1" = 32'

File Path: C:\Users\jmw\Documents\Projects\Rowandale\Rowandale.dwg

Project: 20220701

Sheet No.: 200

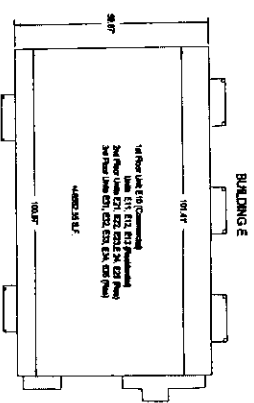
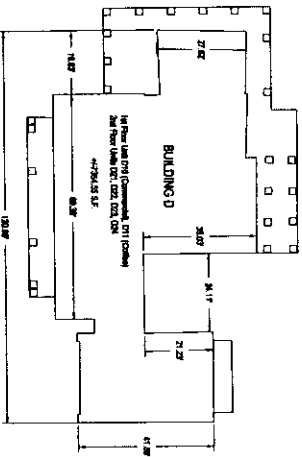
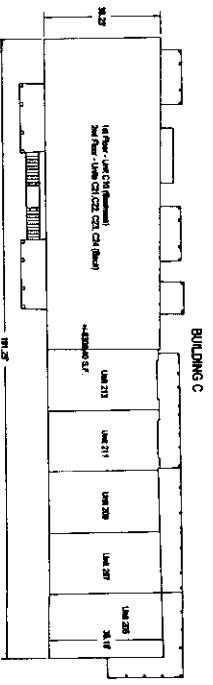
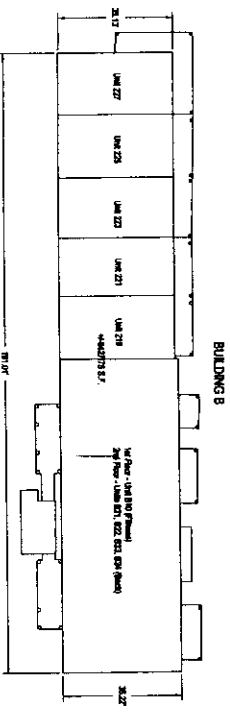
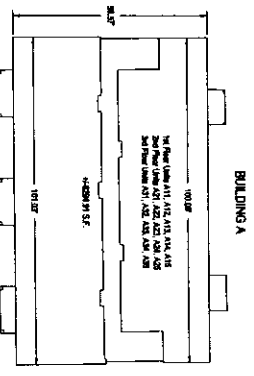
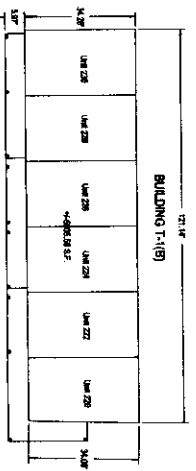
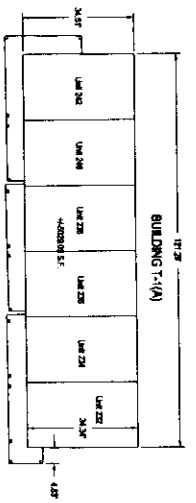
Sheet Title: Floor Plan & Addresses

Scale: 1" = 32'

3 of 7

**SHEET INDEX**

- Sheet 1 - Survey and Existing Conditions
- Sheet 2 - Proposed Building Footprints
- Sheet 3 - Proposed Unit Addresses
- Sheet 4 - Floor Plan & Addresses
- Sheet 5 - Condominium Plat (Phase 1A)
- Sheet 6 - Condominium Plat (Phase 1B)
- Sheet 7 - Condominium Plat (Phase 1C)



UNIT INFORMATION TABLE

UNIT NUMBER	UNIT NAME	ADDRESS
201	Unit 201	1000 S. 1st St.
202	Unit 202	1000 S. 1st St.
203	Unit 203	1000 S. 1st St.
204	Unit 204	1000 S. 1st St.
205	Unit 205	1000 S. 1st St.
206	Unit 206	1000 S. 1st St.
207	Unit 207	1000 S. 1st St.
208	Unit 208	1000 S. 1st St.
209	Unit 209	1000 S. 1st St.
210	Unit 210	1000 S. 1st St.
211	Unit 211	1000 S. 1st St.
212	Unit 212	1000 S. 1st St.
213	Unit 213	1000 S. 1st St.
214	Unit 214	1000 S. 1st St.
215	Unit 215	1000 S. 1st St.
216	Unit 216	1000 S. 1st St.
217	Unit 217	1000 S. 1st St.
218	Unit 218	1000 S. 1st St.
219	Unit 219	1000 S. 1st St.
220	Unit 220	1000 S. 1st St.
221	Unit 221	1000 S. 1st St.
222	Unit 222	1000 S. 1st St.
223	Unit 223	1000 S. 1st St.
224	Unit 224	1000 S. 1st St.
225	Unit 225	1000 S. 1st St.
226	Unit 226	1000 S. 1st St.
227	Unit 227	1000 S. 1st St.
228	Unit 228	1000 S. 1st St.
229	Unit 229	1000 S. 1st St.
230	Unit 230	1000 S. 1st St.
231	Unit 231	1000 S. 1st St.
232	Unit 232	1000 S. 1st St.
233	Unit 233	1000 S. 1st St.
234	Unit 234	1000 S. 1st St.
235	Unit 235	1000 S. 1st St.
236	Unit 236	1000 S. 1st St.
237	Unit 237	1000 S. 1st St.
238	Unit 238	1000 S. 1st St.
239	Unit 239	1000 S. 1st St.
240	Unit 240	1000 S. 1st St.
241	Unit 241	1000 S. 1st St.
242	Unit 242	1000 S. 1st St.
243	Unit 243	1000 S. 1st St.
244	Unit 244	1000 S. 1st St.
245	Unit 245	1000 S. 1st St.
246	Unit 246	1000 S. 1st St.
247	Unit 247	1000 S. 1st St.
248	Unit 248	1000 S. 1st St.
249	Unit 249	1000 S. 1st St.
250	Unit 250	1000 S. 1st St.

Note: System drawings of all units represent the overall footprint of proposed buildings under Construction. The overall footprint shown in this drawing may differ from the actual footprint.



**WILLIAMS ENGINEERING CONSULTANTS, INC.**  
Professional Engineers | Professional Land Surveyors

720 NORTH LAMAR BOULEVARD SUITE A  
Oxford, Mississippi 38655  
662.232.9974

Boundary Survey & Condominium Plat For  
**Rowandale, A Condominium**  
PHASES 1 A,C,D, PHASES 2A,B, PHASES 3A,B  
Northwest Quarter (NE 1/4) of Section 16, Township 8 South, Range 3 West,  
City of Oxford, Lafayette County, Mississippi

DATE: \_\_\_\_\_  
SCALE: 1" = 20'  
DRAWN BY: ENTWISZ  
CHECKED BY: JAWICZ  
DATE: 04-15-2019  
PROJECT: Rowandale  
DRAWN TITLE: Floor Plan & Addresses  
DRAWN BY: JAWICZ



**NOTES**

1. This is a preliminary plat and is not to be construed as a legal document until the final plat is recorded.

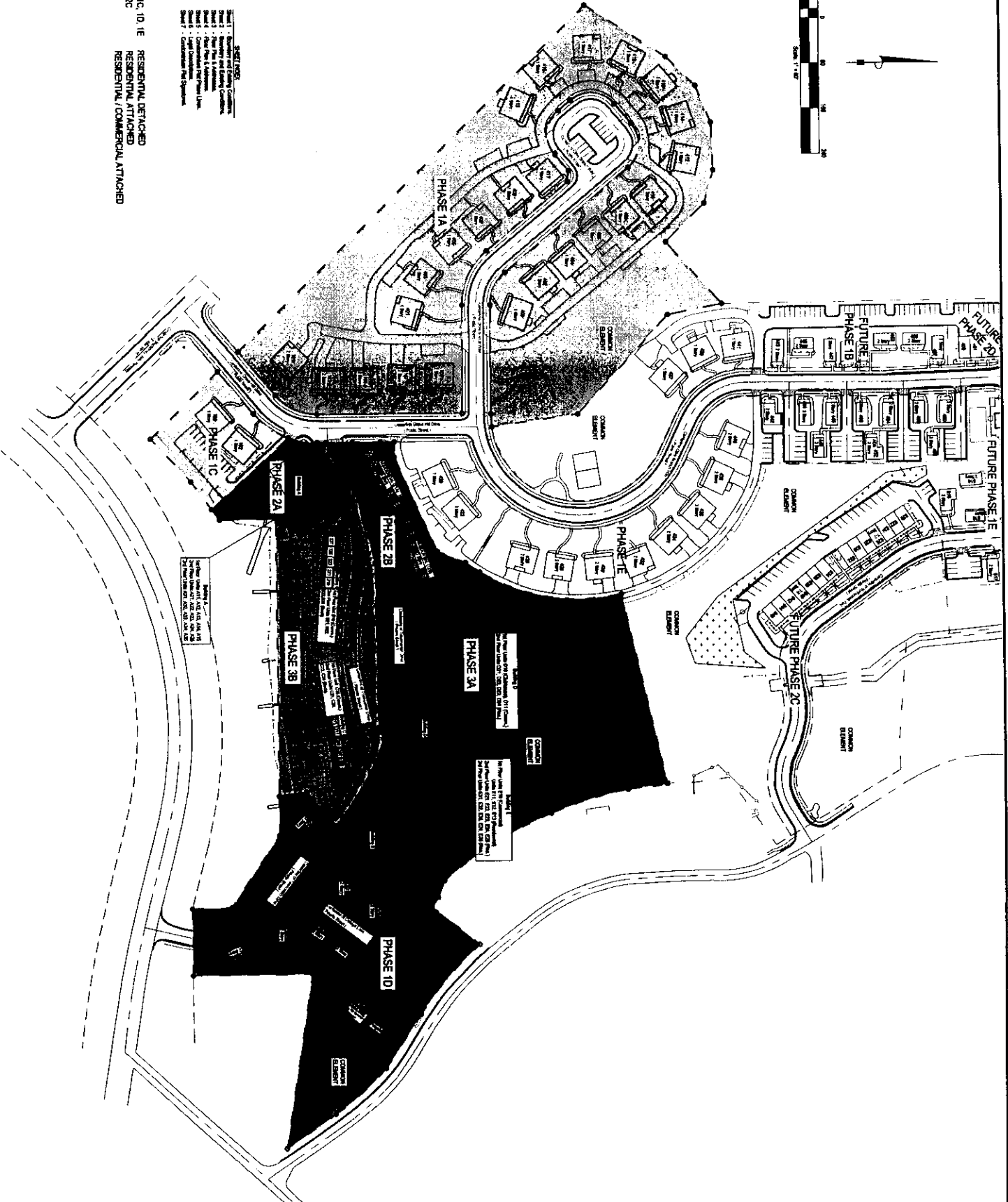
2. The plat is subject to the approval of the appropriate governmental authorities.

3. The plat is subject to the approval of the appropriate governmental authorities.

4. The plat is subject to the approval of the appropriate governmental authorities.

5. The plat is subject to the approval of the appropriate governmental authorities.

PHASE 1A, 1B, 1C, 1D, 1E RESIDENTIAL DETACHED  
 PHASE 2A, 2B, 2C RESIDENTIAL ATTACHED  
 PHASE 3A, 3B RESIDENTIAL, COMMERCIAL ATTACHED



Boundary Survey & Condominium Plat For  
**Rowandale, A Condominium**  
 PHASES 1 A,C,D; PHASES 2A,B; PHASES 3A,B  
 Northeast Quarter (NE 1/4) of Section 16, Township 8 South, Range 3 West,  
 City of Oxford, Lafayette County, Mississippi.



**WILLIAMS ENGINEERING CONSULTANTS, INC.**  
 Professional Engineers | Professional Land Surveyors  
 720 NORTH LAMAR BOULEVARD, SUITE A  
 P.O. BOX 1187 OXFORD, MISSISSIPPI 38655  
 662.236.9676

REVISION	DATE

Scale: 1" = 40'  
 Date: 02/03/2017  
 Prepared By: JAVIER  
 Checked By: JAVIER  
 Drawn By: JAVIER  
 Title: Condominium Plat Phase Lines  
 Sheet No.: 5 of 7



